



Society of Allied Weight Engineers, Inc

Aerospace • Marine • Offshore • Land • Allied Industries

The Leading Authority on Mass Properties since 1939

85th International Conference on Mass Properties

May 17-22, 2026

Conference Program

• 85TH INTERNATIONAL CONFERENCE •

LOS ANGELES

SAWE

*Hyatt Regency
Valencia, Los Angeles,
California*

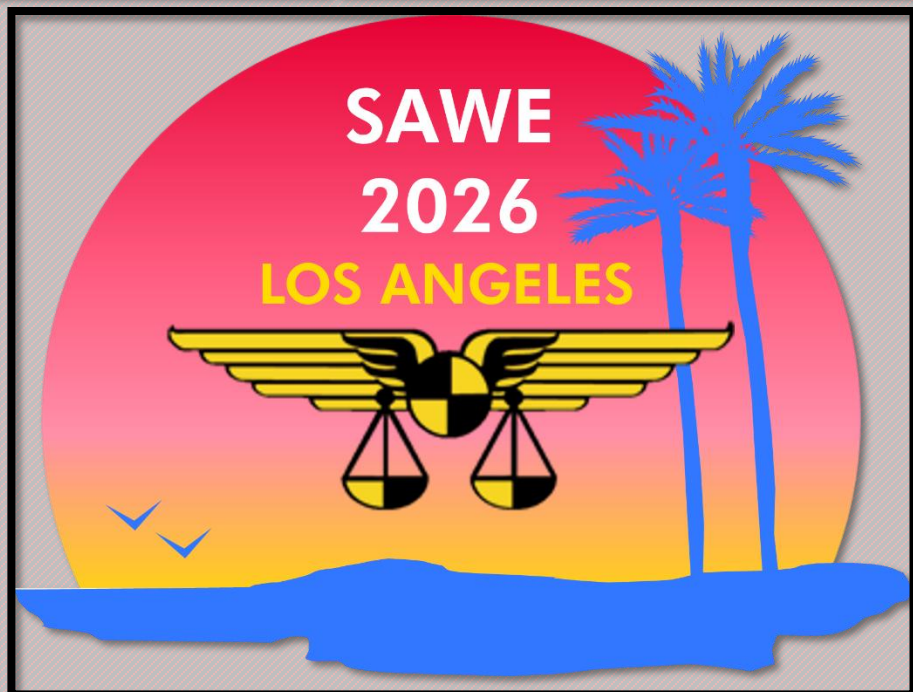
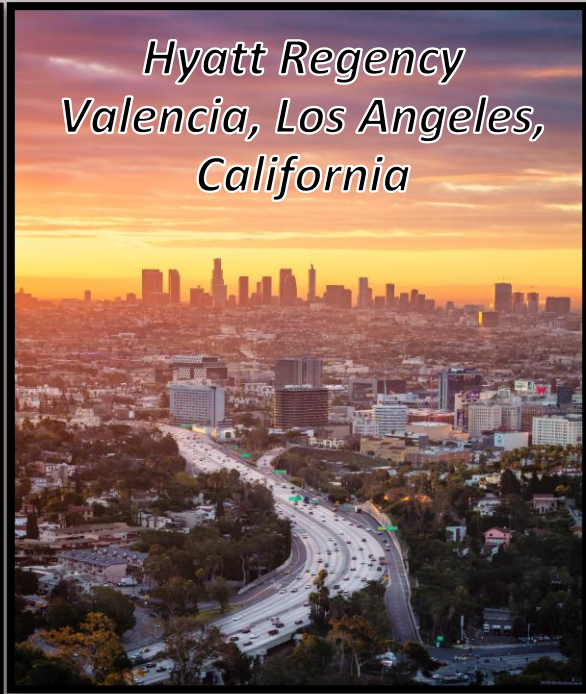




Table of Contents

Society of Allied Weight Engineers, Inc.....	1
Table of Contents	2
Conference General Schedule	3
SAWE President’s Welcome.....	4
Conference Chairs’ Welcome.....	5
Sponsors and Exhibitors.....	7
Supporting Organizations.....	8
Opening Session Keynote Speaker.....	10
Technical Program	11
List of Papers and Presentations	12
Technical Forum	14
Standards and Practices Day.....	15
Standards and Practices Luncheon Speaker	16
Training Program	18
MassTrack / ShipWeight User Group Meeting.....	20
Sunday, May 17 - Schedule Overview.....	21
Monday, May 18 - Schedule Overview	22
Tuesday, May 19 - Schedule Overview	23
Tuesday, May 19 - Conference Details.....	24
Wednesday, May 20 - Schedule Overview.....	25
Thursday, May 21 - Schedule Overview.....	26
Thursday, May 21 - Conference Details.....	27
Friday, May 22 - Schedule Overview.....	28
Hotel Information.....	29
Grand Ballroom Exhibitor Space	30
Conference Committee	31
Officer Transition	33
Silent Auction and Awards Banquet.....	33
Offsite Events	34



Conference General Schedule

	Sunday May 17	Monday May 18	Tuesday May 19	Wednesday May 20	Thursday May 21	Friday May 22
Morning		California Science Center	Opening Session & Keynote	Standards & Practices Day Joint Session	Technical Forum	
Afternoon			Technical Tracks	Industry Workshops	Technical Tracks	JPL Tour
			Luncheon	Industry Workshops		
Full Day	Training	Training	Training	Training	Training	
Evening		Welcome Reception			Awards Banquet	

Notes:

- Detailed schedules for each day are listed later in this program beginning on [Page 21](#) and can be quickly found by clicking on the headers in the table above.
- [MasTrack/ShipWeight User Group](#) meets on Monday, May 18, 2026.
- Full Professional, Retiree, and Student registrations include conference attendance on Tuesday through Thursday, and the Welcome Reception, Luncheon, Awards Banquet, and Hospitality events. Guest registrations include the Welcome Reception, Awards Banquet, and Hospitality.
- Transportation to all offsite events leaves promptly from the hotel lobby at the times indicated on the daily schedules. Please arrive at least 15 minutes prior to departure.
- Silent Auction items should be dropped off at the Registration Desk as soon as possible.
- Stop by the Registration Desk if you have any questions.

Upload Your Photos!

Share your candid pictures throughout the conference using the QR code or this link:



<https://photos.app.goo.gl/Q4ivbDrLKnVQisYu8>



SAWE President's Welcome



Jason Booth

SAWE International President

The Boeing Company

On behalf of the Society of Allied Weight Engineers, I want to welcome you to our 85th Annual International Conference here in Los Angeles, California. Our conference planning committee has assembled a great line up of topics and papers for you. Here is a sample of the many opportunities available to you this year as an attendee:

- Learn about today's latest technologies, techniques and programs.
- Participate in development and updates of mass properties industry standards.
- Take advantage of training opportunities taught by subject matter experts.
- Meet vendor representatives and get acquainted with products and services essential to our jobs.
- Talk informally with customers, competitors, and suppliers.
- Get acquainted with SAWE's Mass Properties Engineer Certification Program.
- Seek out mentors for all things mass properties engineering.
- Learn first-hand about the latest SAWE activities and programs.

SAWE's technical sessions, standards and practices workshops, and forum discussions address the many needs of our members across the military aircraft, commercial aircraft, airline, space, marine, offshore, land vehicles, and allied industries represented by our society.

Our Mass Properties discipline forms the foundation of innovation in engineering shaping how we design, build, and optimize complex systems, from aircraft to automobiles and beyond to improve vehicle performance, safety, and efficiency. At the 85th international conference, we'll explore how mastering mass properties prediction and control empowers smarter designs and sustainable solutions for the future.

Thanks for joining us!



Conference Chairs' Welcome



Dan Rowley
Conference Co-Chairman
Northrop Grumman Corp



Lawrence Cruz
Conference Co-Chairman
The Boeing Company

The Los Angeles Chapter is excited to host this year's 85th International Conference on Mass Properties Engineering as the conference returns to beautiful Valencia, California. Our Conference Host Committee and the International Executive Committee are committed to providing an outstanding program of technical sessions, Standards & Practices workshops, training, and fun conference events for all attendees.

We encourage you to take advantage of everything the Hyatt Regency Valencia Hotel has to offer. There is an indoor/outdoor restaurant serving locally sourced food conveniently located on the hotel property. The hotel also features an outdoor swimming pool and a 24-hour fitness facility on-site, and is only a few minutes away from shopping, restaurants, and entertainment. While Valencia is a charming and tranquil location, you are near all the attractions for which Los Angeles is famous.

Los Angeles is an important location for SAWE. The Society was organized here in 1939 as the Society of Aeronautical Weight Engineers. Southern California witnessed a burgeoning aerospace industry right before the massive technological changes spurred on by the Second World War. Mass Properties engineers from different companies came together to share techniques, network, and develop standards. Los Angeles remains a hub for aerospace innovation, with mass properties engineers involved in the latest technology for commercial, defense and space applications.

The Mass Properties discipline remains as important to the engineering field as it was 87 years ago. Our job defines the physical properties of novel designs and is crucial to excellence and competitive advantage in vehicle design. Our society remains dedicated to safety and excellence in engineering as new designs and technologies emerge. We achieve this by ensuring that new engineers are trained and that the existing mass properties engineers are aware of the new and exciting innovations in the field.

If you need help during the conference, feel free to reach out to any of our officers in-person or by email at conferencesupport@sawe.org.

Welcome and Enjoy the Conference!



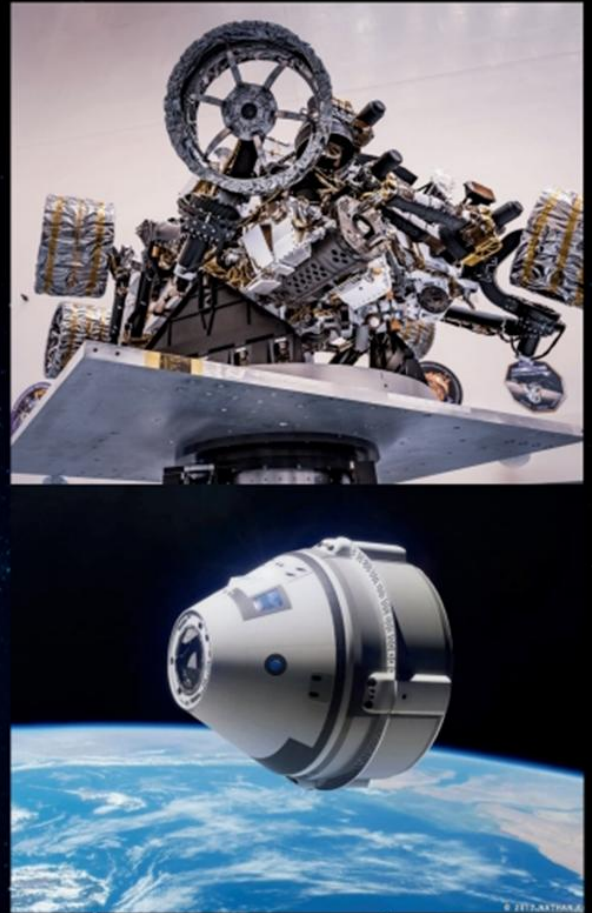
RAPTOR SCIENTIFIC®

GLOBAL PROVIDER OF TEST & MEASUREMENT SOLUTIONS

- Mass Properties Measurement Instruments & Services
 - Weight & Center of Gravity (CG)
 - Moment of Inertia (MOI)
 - Product of Inertia (POI)
 - Dynamic Balancing
 - Gimbal Balancing
- Igniter Circuit Testers
- Radar Cross Section Measurement Products
- Moment Weight Scales
- Fixtures and Accessories
- Gas Bearings
- Space Simulators
- Avionics Systems - Air Data Test Equipment



(860) 829 0001
sales@raptor-scientific.com
raptor-scientific.com



Looking for help with tough technical challenges?
Maybe you need some career advice?

Try becoming a Mentee!

Check out our Mentoring Program at
<https://www.sawe.org/mentoring>

or

Stop by the Career Development table at the
Conference



Sponsors and Exhibitors



Clint Stephenson

SAWE VP Vendor Relations

The Boeing Company

On behalf of the International Society of Allied Weight Engineers, we are excited to welcome our sponsors and exhibitors to this year's conference. During our conference, as an exhibitor, you will have ample opportunities to meet with our attendees to display your products and services and discuss the value of applying these offerings to their mass properties challenges.

Your exhibitor space adjacent to the main conference hall will allow you to engage and provide valuable insight to our members. If you have questions regarding your exhibitor space, exhibit hall provisions, shipping and handling of displays, or anything else please reach out to me at vendor@sawe.org or browse through your Exhibitor's Packet at [SAWE Conference Sponsor and Exhibitor Info](#).

Many thanks to our Corporate Partners and Research Access Members. These organizations receive a free exhibition space as part of their annual membership benefits. Also, Gold Partners receive 6 free conference registration packages, and Silver Partners and Research Access Members receive 2 free registrations. If you would like to become a partner, you can sign up at [SAWE Corporate Partners](#).

Along with your exhibition space and registrations, your company logo will be featured in our online publications and displayed during the conference. You will also have an opportunity to address our attendees during a dedicated time slot as part of the conference proceedings. Much more information is available at the links above, or you can reach out to us via email at vendor@sawe.org.

We look forward to seeing your solutions!



Supporting Organizations

SAWE Corporate Partners



+ Research Organizations

SAWE Company Members



Exhibitors





UNMATCHED

- STABILITY
- ACCURACY
- QUALITY

Aircraft Weighing
Scales, Systems &
Certified Trainings

Visit us at the
**2026 SAWE
CONFERENCE!**



intercompcompany.com
+1 763-476-2531





Opening Session Keynote Speaker

Dr. Michael Buonanno

***Air Vehicle Manager/X-59 Quiet Supersonic Technology Program
Lockheed Martin***

Dr. Michael Buonanno is the Air Vehicle lead for the X-59 Quiet Supersonic Technology (QueSST) X-plane at Lockheed Martin Skunk Works® in Palmdale, CA. In this role he leads the technical development of the X-plane design currently being developed under contract with NASA. Prior to this role, Mike served as Program Manager for the activities that immediately preceded QueSST: The Low Boom Flight Demonstrator Concept Formulation and Refinement studies, as well as the N+2 Supersonic Validations program.



Dr. Buonanno is a Lockheed Martin Fellow and has 20 years of industry experience as a conceptual design engineer at Skunk Works. In that time, he led or supported a diverse array of aircraft development

programs, including small UAVs, solar-powered aircraft, and other programs. Recently, his work has been focused on advancing the technology required to reduce the sonic boom that has been historically associated with supersonic overland flight. He received his bachelor's degree in aerospace engineering from the Illinois Institute of Technology, and earned Master of Science and Doctorate degrees in Aerospace Engineering from Georgia Tech.





Technical Program



Amanda Cutright
SAWE VP Technical Director
NASA Langley Research Center



Robert Zimmerman
SAWE Deputy VP Technical
Lockheed Martin Corp - Retired

Since 1939, the Society of Allied Weight Engineers has advanced the exchange of technical knowledge in Mass Properties Engineering. As we celebrate our 85th International Conference, we are excited that you and your colleagues are here to share the innovative work you've accomplished. Each year, we look forward to your technical contributions and the ideas that strengthen our community.

Professionals from around the world are gathered here to exchange expertise and best practices across industries where mass properties are critical to performance. Newcomers are encouraged to learn from global experts and participate in meaningful technical discussions. Two full days of Technical Sessions will address a broad range of challenges, applications, and solutions to support your daily work. SAWE members represent marine, military and commercial aircraft, offshore, ground vehicles, missiles, and space sectors, offering diverse examples of technical excellence.

We also value the contributions of students, whose fresh perspectives help shape the future of vehicle design and operation.

On Thursday morning, our Conference will feature a Technical Forum on ***“Mass Properties and Performance of Electrical Vertical Take-Off and Landing (eVTOL) Aircraft Vehicles”***. Panelists will share their expertise before opening the floor to audience questions—an interactive exchange that has become a conference highlight.

A list of papers and presentations to be delivered at the conference is shown on the following page. A detailed schedule of the conference proceedings by day is presented later in this program. Check back often for the latest updates.



List of Papers and Presentations

No.*	Title	Authors	Day / Time	Track
3837	The Influence of Mass Properties on Key Performance Parameters in Space Technology Development	Amanda Cutright – NASA Langley Research Center	Thu 10:45 AM	I
3838 (P)	Career Development with SAWE	Robert Zimmerman – SAWE and Lockheed Martin Corp (Retired)	Tue 1:45 PM	I
3839 (P)	The Value of Hands-on Experience – Technical Forum Results	Dirk Petersen – SAWE	Thu 10:15 AM	I
3840	The Learjet 85: Historical Evolution, Critical Challenges and Lessons from a Misguided Program	Darrin McCloud - M2 Consulting	Thu 1:45 PM	I
3841	Recommended Practice (RP) Functional Sub-codes: Simplified Part Categories for Better Early Program Weight Estimation and Enabling AI Analysis	Roman Aman - Lockheed Martin Corp	Tue 11:30 AM	I
3842	Modernizing SumMassProps	Robert Zimmerman – SAWE and Lockheed Martin Corp (Retired)	Thu 2:30 PM	I
3843	Digital Exposure of Mass Properties Data	Nick Thies - Northrop Grumman Corp	Thu 3:30 PM	I
3844	Unintentional Lateral Imbalance Calculation Methodology for Freighter Aircrafts	Alejandro Fiestras Corcho - Airbus	Tue 2:30 PM	I
3845	The Earned Value Evolution of the Plan to Perform	Patrick Brown - Northrop Grumman Corp	Tue 10:45 AM	I
3846	Vendor Guarantee Weights in Product Development	Douglas Fisher - Collins Aerospace	Tue 10:00 AM	I
3851	Roll and Horizontal Axis Moment of Inertia (MOI) Measurements Using a Gravity Pendulum	James Blair – Raptor Scientific	Tue 3:30 PM	I
3852 (P)	SAWE Membership Committee Report	Jason Booth – SAWE	Thu 4:00 PM	I
3854	The Impact of Changing Test Weight Vertical Center of Gravity on a Shipboard Inclining Experiment	Alan Bryden, Robert Dvorak - NAVSEA	Tue 4:15 PM	I
3855	Double Shell and Sandwich Fuselages for Future Aircraft	Hans-Peter Dahm – TGM Lightweight Solutions GmbH	Thu 11:30 AM	II
3856	Weight Management of Ground Vehicles	Hans-Peter Dahm – TGM Lightweight Solutions GmbH	Thu 10:45 AM	II
3857 (P)	Mass Properties Musings	Dirk Petersen - SAWE	Thu 4:30 PM	I
3858	Integrated Product Design for Mass Properties Control: Connecting Requirements, Architecture, Configuration, and Verification through the Digital Thread	Vince Mendoza – Siemens DISW	Thu 11:30 AM	I

*(P) – Presentation Only

Stay tuned for updates as they become available!



WHO WE ARE

As a global defense tech company, we are driving innovation and advancing scientific discovery. Our all-domain mission solutions and 21st Century Security vision accelerate the delivery of transformative technologies to ensure those we serve always stay ahead of ready.

122K

Employees worldwide

65K

Engineers, scientists or
technologists

20%

Employees who are
veterans

345+

Facilities worldwide

Mass Properties Textbooks Available!

In-depth reference books for Aircraft Weight Engineering, Marine Vehicle Weight Engineering, Moments of Inertia and Products of Inertia of a Rigid Body, and our SAWE Weight Engineer’s Handbook.

For more info visit our store at
<https://www.sawe.org/product-category/publications/textbooks>





Technical Forum

SAWE and Intercomp are proud to present our Technical Forum this year:

Mass Properties and Performance of Electrical Vertical Take-Off and Landing (eVTOL) Aircraft Vehicles

Moderator: Amanda Cutright, SAWE VP – Technical, NASA Langley

This year's Technical Forum features a panel of experts from multiple organizations who will discuss their experience with electric Vertical Take-Off and Landing (eVTOL) vehicles and the critical role of mass properties in their design and development. Advanced Air Mobility (AAM) is accelerating the shift toward on-demand, distributed, lower-emission air transport, bringing new mass properties challenges across the entire lifecycle—from concept and sizing through certification and operations.

The forum will begin with brief remarks from each panelist, followed by an interactive discussion where audience members can ask questions or share their own perspectives. We encourage you to engage with the panel and contribute your insights related to mass properties and eVTOL performance.

We look forward to connecting with a cross-disciplinary audience involved in eVTOL mass properties, including weights engineering, loads and dynamics, aero/propulsion, structures, systems safety, certification, manufacturing, and operations. We welcome participation from OEMs, suppliers, researchers, engineers, operators, regulators, students, and others in the discussion.



Exclusive Sponsor of this Forum on Thursday, May 21st.

Visit our booth in the Exhibit Hall to learn how we can help with your weighing needs.

Image Credits to AdobeStock



Standards and Practices Day



Nick Thies

SAWE VP Standards and Practices

Northrop Grumman Corp

SAWE supports mass properties professionals and their customers by making available products such as Recommended Practices, textbooks, and handbooks. The Standards and Practices committee provides a non-proprietary consensus forum for developing these products which make our professional activities more efficient, more consistent, and more valuable to the professionals of today and tomorrow, as well as making them more understandable to our customers. This effort is so important that an entire day, Wednesday, is dedicated to it. All are invited to attend, learn more, and help us improve our profession. We welcome new ideas, new participants, and new contributions. This is your opportunity to make your voice heard.

The day will begin with a review of the year's progress and future objectives. Then the industry committees will meet in separate break-out sessions for most of the morning. The Standards and Practices Luncheon will follow and feature a keynote speaker. After lunch, the industry committees will return to their break-out sessions before reconvening at the end of the day for a short debrief of their day's accomplishments to all.

Six industry committees encompass the breadth of SAWE activities. Each industry committee will meet in a separate break-out session for most of the day. During this time, industry needs and opportunities are reviewed, past progress is reviewed, future activities are planned, and next year's committee chairs can be elected. Committees may use the forum to brainstorm or build consensus on a particularly challenging issue. The committees are:

- Civil Aircraft– private, commercial, and general aviation aircraft; includes airline operations and piloted/autonomous flight mobility vehicles.
- Ground Vehicles – private, commercial, government and military cars, trucks, motorcycles, off-road vehicles, construction equipment, and trains.
- Marine – private, commercial, government and military surface vessels and submarines.
- Military Aircraft – military fixed wing, rotary wing, and lighter-than-air vehicles; includes remotely piloted/autonomous military aircraft, and modifications to commercial aircraft for military applications.
- Missiles & Space – commercial, government and military missiles, launch vehicles, and spacecraft.
- Offshore – fixed base, floating and semi-submersible platforms primarily for commercial petroleum exploration, drilling, and production.

You are not required to join the session that matches your industry, nor are you required to stay all day in one session. For example, you may choose to join one session in the morning and another in the afternoon.



Standards and Practices Luncheon Speaker



Michael Galvin
Structures Engineering Manager
JetZero

Mike Galvin leads the Demonstrator Structures engineering team at JetZero. His engineering background includes both primary and propulsion structures. Mike began his engineering career with Boeing as a stress analyst supporting 767 wing and empennage. His role evolved to focus on the Boeing single aisle fleet and mitigation of safety issues. He moved to the Boeing Propulsion Stress team in Long Beach where he was responsible for APU (Auxiliary Power Unit) structures on all BCA/MDC (Boeing Commercial Aircraft/McDonnell Douglas) models, and from there to Jet Zero.

Mike has a B.S. in Civil Engineering from Florida International University and M.A. in Spanish Literature from Florida State University.

JetZero, co-founded by aerospace legend Mark Page and start-up veteran Tom O'Leary, is developing the world's first commercial all wing airplane. With up to 50% lower fuel burn and carbon emissions compared to existing commercial airliners, JetZero's Z4 will offer the aviation industry a clear path to achieving its 2050 net-zero goals while reducing operating costs and elevating passenger experience. Working alongside the US Air Force, NASA, and the FAA, and backed by decades of investment and research into blended wing technology, JetZero looks to enter commercial service by 2030.





AIRCRAFT SCALES • TRUCK SCALES • CALIBRATION • WEIGHT AND BALANCE TRAINING

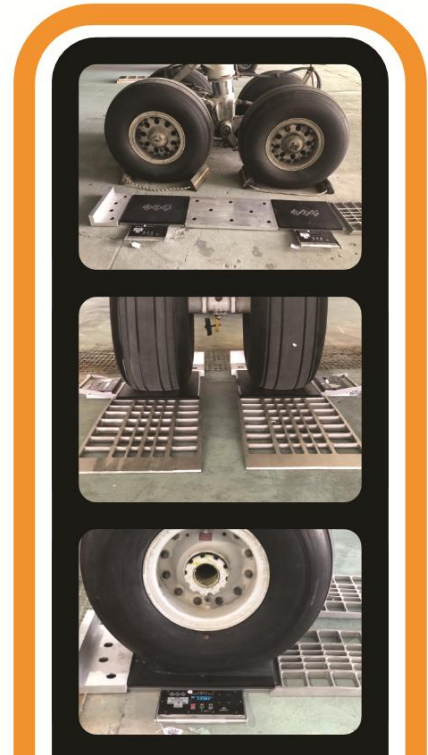
MORE WEIGHING. LESS WAITING.

Industry leading **accuracy** and **reliability** means certified calibration intervals, less downtime, and **longer system life**.

gecscales.com • info@gecscales.com • + 1.817.572.0366



The lowest weighing surface on the market means lighter scales, shorter ramps, and faster weighing.



**Not a member yet?
Join our global community!**

Sign up today at
<https://www.sawe.org/members/>
and start taking advantage of our
members only benefits and discounts.



Training Program



Darren Gamble
SAWE VP Training
Short Brothers, a Boeing Company



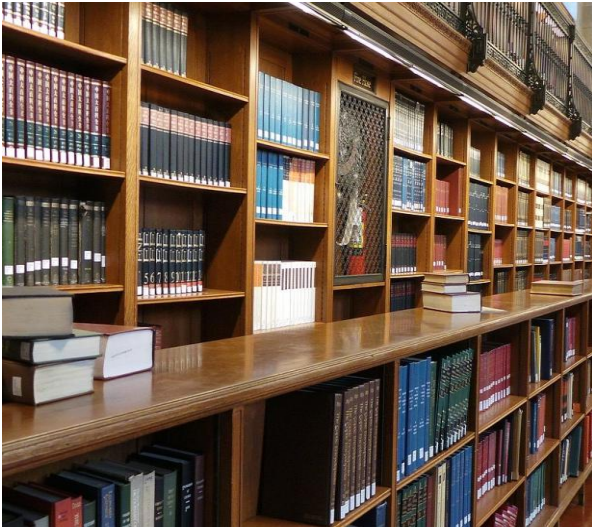
Richard Manning
Conference Training Coordinator
The Boeing Company

This year, the Training Program will take place from May 17 through May 21, 2026. SAWE has a long-proven track record of delivering outstanding training, and we hope that you will enjoy training with us here in Los Angeles. The list of courses and their locations is shown in the table below. More details regarding instructors, and descriptions of the courses may be found at [SAWE Training](#).

Training Classes for May 2026		
Class	Day	Instructor
Vendor Weight Control	Sunday, May 17	Rod VanDyk
Aircraft Fuel System Calibration	Monday, May 18 (AM)	Rod VanDyk
Inertia Fundamentals ★NEW★	Monday, May 18	Damian Yañez
Developing Basic Parametric Methods	Tuesday, May 19	Andy Walker
Aircraft Weight and Balance	Tuesday & Wednesday, May 19-20	Errol Oguzhan
Automated Weight and Balance System (AWBS) Software	Thursday, May 21	Harold Smoot



For more information visit
[SAWE Training](#)
or
Stop by the Career Development
Table at the Conference



Looking to see if others have solved similar challenges to yours?

Search our extensive Technical Library at
<https://www.sawe.org/resources/library-resources/sawe-technical-papers/>

Over 3800 papers are available to search and purchase for download.



Searching for new Mass Properties talent?

Post your available positions on our website!

Contact us at:

<https://www.sawe.org/contact/#postJob>

Our members include the most experienced Mass Properties Professionals in the world.



MasTrack / ShipWeight User Group Meeting



MasTrack



ShipWeight

The 17th MasTrack/ShipWeight User Group meeting will be held on Monday, May 18, 2026, in conjunction with the 85th SAWE International Conference on Mass Properties. The meeting will be of interest to active users of MasTrack and ShipWeight as well as those who are considering acquiring it.

The meeting is also an opportunity to meet other users in an informal setting for exchanging experiences and discussions on best practices. Last, but not least, it is a great opportunity to provide feedback to the developers and participate in making priorities for future development of the software.

MasTrack/ShipWeight User Meeting –Schedule*	
May 18, 2026	
8:30 am – 8:40 am	Welcome
8:40 am – 10:00 am	Overview of Latest Release
10:00 am – 10:30 am	Coffee break
10:30 am – 11:30 am	The new data import window
11:30 am – 12:00 pm	Enhancements to the parametric estimation window
12:00 pm – 1:30 pm	Lunch
1:30 pm – 2:00 pm	Rule definition for QA of data
2:00 pm – 3:00 pm	The new dynamic report window
3:00 pm – 3:30 pm	Coffee break
3:30 pm – 4:30 pm	Organizing toolbars, menus and elements in the dashboard
4:30 pm – 5:00 pm	Questions and Answers/Discussions

* We reserve the right to change the agenda.



Sunday, May 17 - Schedule Overview

Time (PDT)	Conference	Training	Events
7:00 AM	Registration / Information Desk Open – Garden Foyer		
8:00 AM		Vendor Weight Control - Saugus	
12:00 PM		Lunch Break	
1:00 PM		Resume Vendor Weight Control - Saugus	
5:00 PM			
9:00 PM			Hospitality - McBean Suite, Room 629
11:00 PM			

Training Session

Onsite Event



Monday, May 18 - Schedule Overview

Time (PDT)	Conference	Training	Events
7:00 AM	Registration / Information Desk Open – Garden Foyer		
8:00 AM		Inertia Fundamentals - Saugus MassTrack/ShipWeight – Canyon Country Aircraft Fuel System Calibration (morning only) - Castaic	California Science Center - Hotel Lobby (Meet by 8:15 AM)
8:30 AM			
11:30 AM			
12:00 PM		Lunch Break	
1:00 PM	Exhibitor Setup - Grand Ballroom CDE	Resume Classes (except Fuel Cal) - Same rooms	
2:00 PM			
4:00 PM			
5:00 PM			1st Time Attendees Intro*
5:30 PM			Welcome Reception - Topiary Garden
6:00 PM			Hospitality - McBean Suite, Room 629
8:00 PM			
11:00 PM			

* Pre-reception for first-time attendees to meet SAWE Officers and Mentors. – Topiary Garden

Prep Time

Training Session

Offsite Event

Onsite Event



Tuesday, May 19 - Schedule Overview

Time (PDT)	Conference		Training	Events
7:00 AM	Registration / Information Desk Open – Garden Foyer			
8:00 AM	Opening Remarks - Grand Ballroom AB		Aircraft Weight and Balance (Day 1) – Saugus/Castaic Developing Basic Parametric Methods – Newhall	Ronald Reagan Presidential Museum - Hotel Lobby (Meet by 8:15 AM)
8:30 AM	Keynote Speaker - Grand Ballroom AB			
9:30 AM	Break – Grand Ballroom CDE			
10:00 AM	Technical Program - Grand Ballroom AB		Resume Classes - Same Rooms	
12:00 PM	Lunch Break (On Your Own)	Corp. Partner Lunch (Invitation Only) – Canyon Country	Lunch Break	
1:00 PM			Resume Classes - Same Rooms	
1:30 PM	Resume Technical Program - Grand Ballroom AB		Resume Classes - Same Rooms	
3:00 PM	Break – Grand Ballroom CDE			
3:30 PM	Resume Technical Program - Grand Ballroom AB		Resume Classes - Same Rooms	
4:30 PM	Exhibitor Networking Session - Grand Ballroom CDE			
5:00 PM				
6:00 PM				
6:30 PM				MB2 Entertainment - Hotel Lobby
10:00 PM				Hospitality - McBean Suite, Rm 629
11:00 PM				

Technical Session

Training Session

Offsite Event

Onsite Event



Tuesday, May 19 - Conference Details

Time (PDT)	Technical Program - Grand Ballroom AB
8:00 AM	Opening Remarks
8:30 AM	Keynote Speaker – Dr. Michael Buonanno, Lockheed Martin
9:30 AM	Break – Grand Ballroom CDE
10:00 AM	3846: <i>Vendor Guarantee Weights in Product Development</i> – Douglas Fisher, Collins Aerospace
10:30 AM	Intercomp
10:45 AM	3845: <i>The Earned Value Evolution of the Plan to Perform</i> – Patrick Brown, Northrop Grumman
11:15 AM	B&A Software
11:30 AM	3841: <i>Recommended Practice (RP) Functional Sub-codes: Simplified Part Categories for Better Early Program Weight Estimation and Enabling AI Analysis</i> - Roman Aman, Lockheed Martin
12:00 PM	Lunch Break (On Your Own)
1:30 PM	Raptor Scientific
1:45 PM	3838 (P): <i>Career Development with SAWE</i> – Robert Zimmerman, SAWE
2:15 PM	Anduril
2:30 PM	3844: <i>Unintentional Lateral Imbalance Calculation Methodology for Freighter Aircrafts</i> – Alejandro Fiestras Corcho, Airbus
3:00 PM	Break – Grand Ballroom CDE
3:30 PM	3851: <i>Roll and Horizontal Axis Moment of Inertia (MOI) Measurements using a Gravity Pendulum</i> – James Blair, Raptor Scientific
4:00 PM	Archer Aviation
4:15 PM	3854: <i>The Impact of Changing Test Weight Vertical Center of Gravity on a Shipboard Inclining Experiment</i> – Alan Bryden, Robert Dvorak, NAVSEA
4:45 PM	Exhibitor Networking Session – Grand Ballroom CDE
6:00 PM	

*(P) - Presentation Only

Mass Properties Processes
Chair: Amanda Cutright

Balanced or Not
Chair: John Nakai



Wednesday, May 20 - Schedule Overview

Time (PDT)	Conference	Training	Events
7:00 AM	Registration / information Desk Open – Garden Foyer		
8:00 AM	S&P Day Opening Remarks & Certification	Aircraft Weight and Balance (Day 2) – Grand Foyer then Offsite (Meet by 7:45 AM)	Vasquez Rocks and Wine Tasting - Hotel Lobby (Meet by 8:15 AM)
8:30 AM	Workshop – Grand Ballroom AB		
9:30 AM	Break – Grand Ballroom CDE		
10:00 AM	Career Development Presentation – Dirk Petersen - Grand Ballroom AB		
10:45 AM	Industry Breakouts <ul style="list-style-type: none"> • Military Aircraft – Grand Ballroom AB • Civil Aircraft – Canyon Country • Missiles and Space – Newhall • Offshore – McBean Suite • Marine – Executive Board Room 		
12:00 PM	S&P Luncheon – Valencia Ballroom	Lunch Break	
1:00 PM	Plenary Session: JetZero – Michael Galvin – Grand Ballroom AB	Resume Class – Saugus/Castaic	
2:00 PM	Industry Breakouts (cont.) – Same rooms as morning sessions		
3:00 PM	Break – Grand Ballroom CDE		
3:30 PM	Industry Breakouts (cont.) – Same rooms as morning sessions	Resume Class – Saugus/Castaic	
5:00 PM	Summary Session – Grand Ballroom AB		
6:00 PM	Lessons Learned Meeting (Invitation Only) – Executive Board Room		
7:00 PM			Hospitality - McBean Suite, Rm 629
11:00 PM			

Standards & Practices

Training Session

Offsite Event

Onsite Event



Thursday, May 21 - Schedule Overview

Time (PDT)	Conference		Training	Events
	Track I	Track II		
7:00 AM	Registration / Information Desk Open – Garden Foyer			
8:00 AM	Technical Forum - Grand Ballroom AB		AWBS – Saugus/Castaic	Warner Brothers Studio Tour / Griffith Observatory - Hotel Lobby (Meet by 8:15 AM)
8:30 AM				
9:30 AM	Break – Grand Ballroom CDE			
10:00 AM	Technical Session - Grand Ballroom AB	Technical Session - Newhall	Resume Class – Saugus/Castaic	
12:00 PM	Lunch Break (On Your Own)		Lunch Break	
1:00 PM				
1:30 PM	Resume Technical Session - Grand Ballroom AB		Resume Class – Saugus/Castaic	
3:00 PM	Break – Grand Ballroom CDE			
3:30 PM	Resume Technical Session - Grand Ballroom AB		Resume Class – Saugus/Castaic	
4:50 PM	Closing Remarks - Grand Ballroom AB			
5:00 PM	Exhibitor Pack Up - Grand Ballroom CDE			
6:00 PM				Reception/ Auction - Grand Foyer
7:00 PM				Awards Banquet – Valencia Ballroom
9:30 PM				Hospitality - McBean Suite, Room 629
11:00PM				

Technical
Session

Training
Session

Offsite
Event

Onsite
Event



Thursday, May 21 - Conference Details

Time (PDT)	Technical Program	
	Track I – Grand Ballroom AB	Track II - Newhall
8:00 AM	Technical Forum - Mass Properties and Performance of Electrical Vertical Take-Off and Landing (eVTOL) Aircraft Vehicles	
9:30 AM	Break – Grand Ballroom CDE	
10:00 AM	GEC	
10:15 AM	3839 (P): The Value of Hands-on Experience – Technical Forum Results – Dirk Petersen, SAWE	
10:45 AM	3837: The Influence of Mass Properties on Key Performance Parameters in Space Technology Development – Amanda Cutright, NASA Langley	3856: Weight Management of Ground Vehicles – Hans-Peter Dahm, TGM Lightweight Solutions GmbH
11:15 AM	Lockheed Martin	
11:30 AM	3858: Integrated Product Design for Mass Properties Control: Connecting Requirements, Architecture, Configuration, and Verification through the Digital Thread – Vince Mendoza, Siemens DISW	3855: Double-Shell and Sandwich Fuselages for Future Aircraft – Hans-Peter Dahm, TGM Lightweight Solutions GmbH
12:00 PM	Lunch Break (On Your Own)	
1:30 PM	HII	
1:45 PM	3840: The Learjet 85: Historical Evolution, Critical Challenges and Lessons from a Misguided Program – Darrin McCloud, M2 Consulting	
2:15 PM	Boeing	
2:30 PM	3842: Modernizing SumMassProps – Robert Zimmerman, SAWE	
3:00 PM	Break – Grand Ballroom CDE	
3:30 PM	3843: Digital Exposure of Mass Properties Data – Nick Thies, Northrop Grumman	
4:00 PM	3852 (P): SAWE Membership Committee Report – Jason Booth, Boeing	
4:30 PM	3857 (P): Mass Properties Musings – Dirk Petersen, SAWE	
4:50 PM	Closing Remarks	
5:00 PM		

*(P) - Presentation Only

Technology Applications
Chair: Robert Zimmerman

Mass Properties Evolution
Chair: Jason Booth

Integrated Products
Chair: Damian Yañez



Friday, May 22 - Schedule Overview

Time (PDT)	Conference	Training	Events
11:30 AM			<p align="center">Jet Propulsion Laboratory Tour* - Hotel Lobby (Meet by 11:15 AM)</p>
5:00 PM			

*Advanced registration and payment required. Proper identification must be presented to enter.

Offsite
Event



Become a Certified Mass Properties Engineer!

Sign up today to take the exam.

For more info visit us at

<https://www.sawe.org/certification>

or

Stop by the Career Development Table



Hotel Information



Hyatt Regency Valencia

24500 Town Center Dr
Valencia, CA 91355
(661) 799-1234

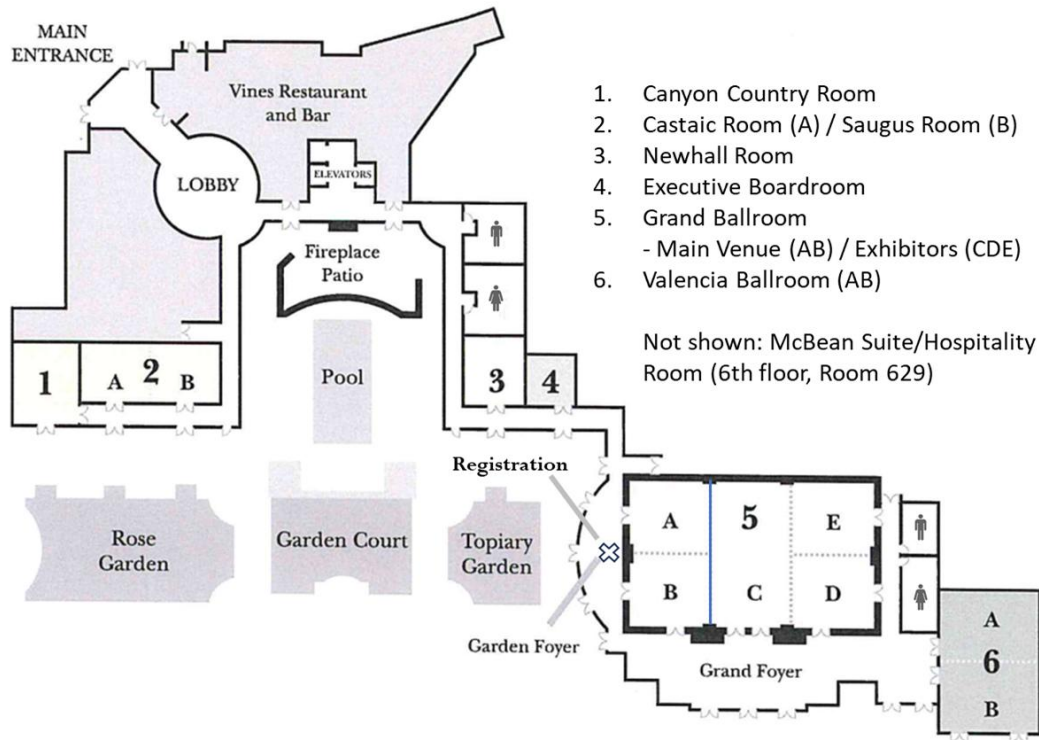
<https://www.hyatt.com/hyatt-regency/en-US/valen-hyatt-regency-valencia>

SAWE Room Rate

\$185/night + tax & fees
(available 3 days before & after)

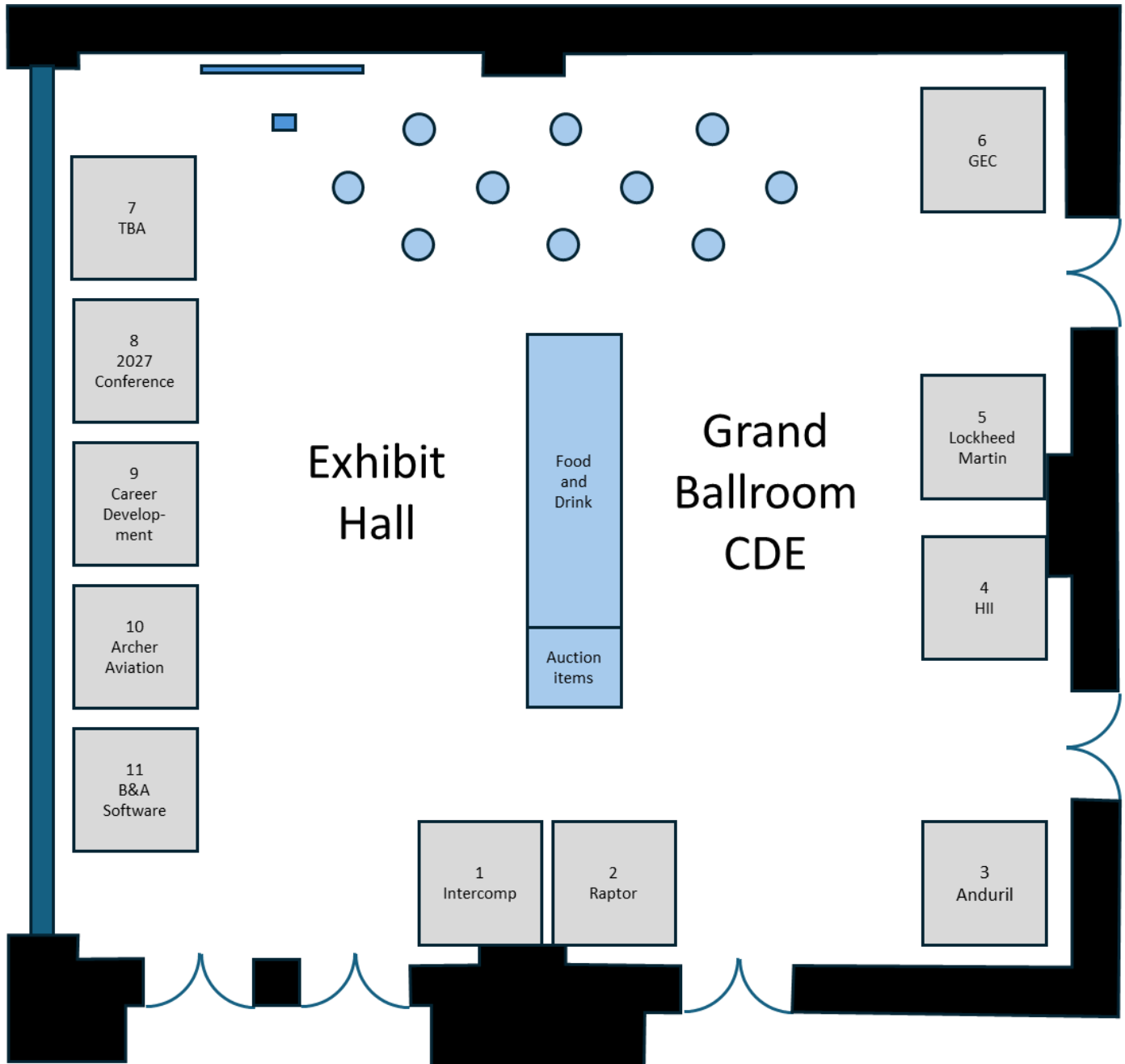
Reservations:

[Book Here](#)
[\(Guaranteed Lowest Rate\)](#)





Grand Ballroom Exhibitor Space



Take time to visit our Exhibitors!



Conference Committee

Position	Name	Affiliation
Conference Co-Chair	Dan Rowley	Northrop Grumman Corp
Conference Co-Chair	Lawrence Cruz	The Boeing Company
Facilities Chair	Bryan Strong	Northrop Grumman Corp
Vendor Coordinator	Daniel Torres-Ceballos	Northrop Grumman Corp
Photography	Katana Barnes	Northrop Grumman Corp
Training Coordinator	Richard Manning	The Boeing Company
Registration Chair	Richard Manning	The Boeing Company
Budget/Finance	Dan Rowley	Northrop Grumman Corp
Publicity Chair	Michael Notarangelo	The Boeing Company
Program/Website Coordinator	Damian Yañez	Gulfstream Aerospace Corp
Hospitality Coordinator	John Hargrave	SAWE Past President
Technical Papers Coordinators	Scott Snelson John Nakai	Northrop Grumman Corp Aerospace Corp (Retired)
Standards & Practices Coordinator	Doug Fisher	Collins Aerospace
Social Events & Transportation	Michael Notarangelo Ian MacNeil	The Boeing Company The Boeing Company
Lessons Learned	Vinh Dinh	Aerospace Corporation
Student Focal	Dr. Donna Gerren	University of Colorado - Boulder



HII

**DELIVERING
THE ADVANTAGE**

INGALLS SHIPBUILDING | MISSION TECHNOLOGIES | NEWPORT NEWS SHIPBUILDING

Weight Engineering Journal

Download our Society Journal published three times per year containing mass properties related articles, technical papers, forum transcripts, and more.

Members receive their copies for free!

For more info visit our store at:

[SAWE Weight Engineering Journals](#)

Historical Journals dating from 1962 may also be viewed at:

[SAWE Members – SAWE Historical Journals](#)





Officer Transition

Many thanks to the following outgoing officers for their selfless service to SAWE!

Chris Wandell	Executive Vice President
Dr. Ali Elham	Vice President – Academic Affairs

Your SAWE Executive Committee members for 2026 – 2027 are:

Jason Booth	President
Runar Aasen*	Executive Vice President
Karla Gregg	Senior Vice President
Robert Hundl	Past President
Dr. Donna Gerren*	Vice President – Academic Affairs
Greg Ray	Vice President – Internet Operations
Aleni Burcham	Vice President - Publications
Nick Thies	Vice President - Standards & Practices
Amanda Cutright	Vice President – Technical Director
Darren Gamble	Vice President – Training
Clint Stephenson	Vice President – Vendor Relations
Dirk Petersen	Vice President – Certification
Bill Boze	Executive Director

*New to the Committee. Welcome and thank you!

Silent Auction and Awards Banquet

Be sure to join us at the **Silent Auction and Awards Banquet on Thursday at 6:00 PM** to support our Scholarship Program and to honor our award recipients, outgoing officers, and future officers. **See you there!**





Offsite Events



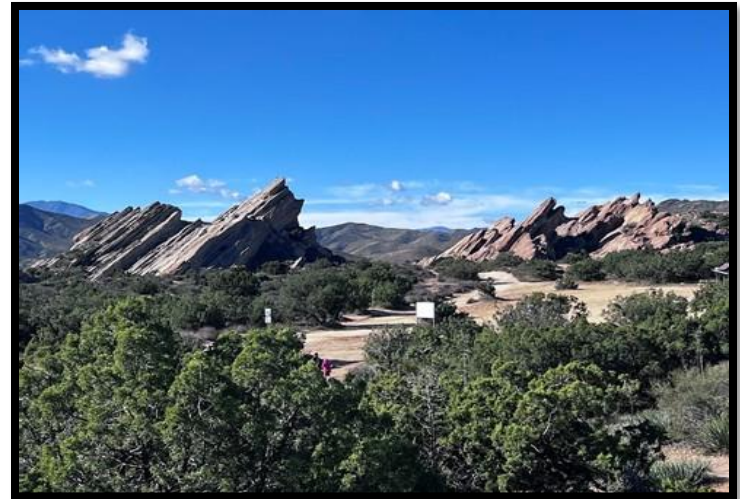
*Monday - California Science Center **



*Tuesday – Reagan Library and Museum**



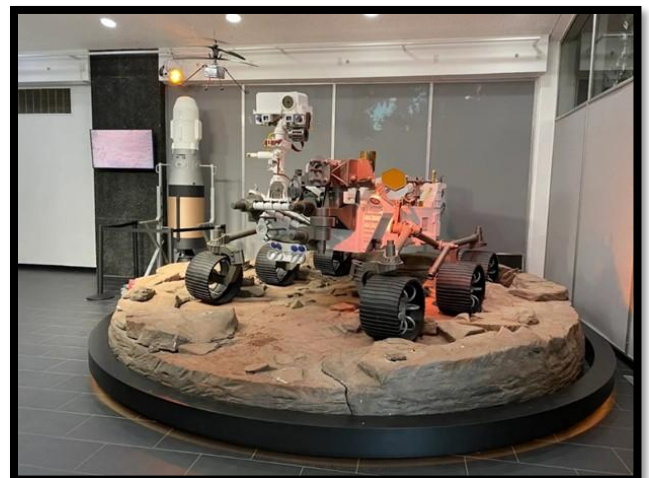
Tuesday Evening – MB2 Entertainment



*Wednesday – Vasquez Rocks and Wine Tasting **



*Thursday – Warner Brothers Tour and Griffith Observatory **



*Friday – Jet Propulsion Lab Tour**

***Separate registration and payment required for these events.**



Guest Events Information

Download our Guest Events Brochure for information on the special tours and networking events in and around the conference.

The brochure is available at:

[Guest Events Info](#)

Student Information

Download our Invitation to Students for more information on the opportunities available at the conference.

Membership for undergraduate students is free!

For more info visit us at:

[Student Conference Info](#)





See You Next Year in Hamburg, Germany!

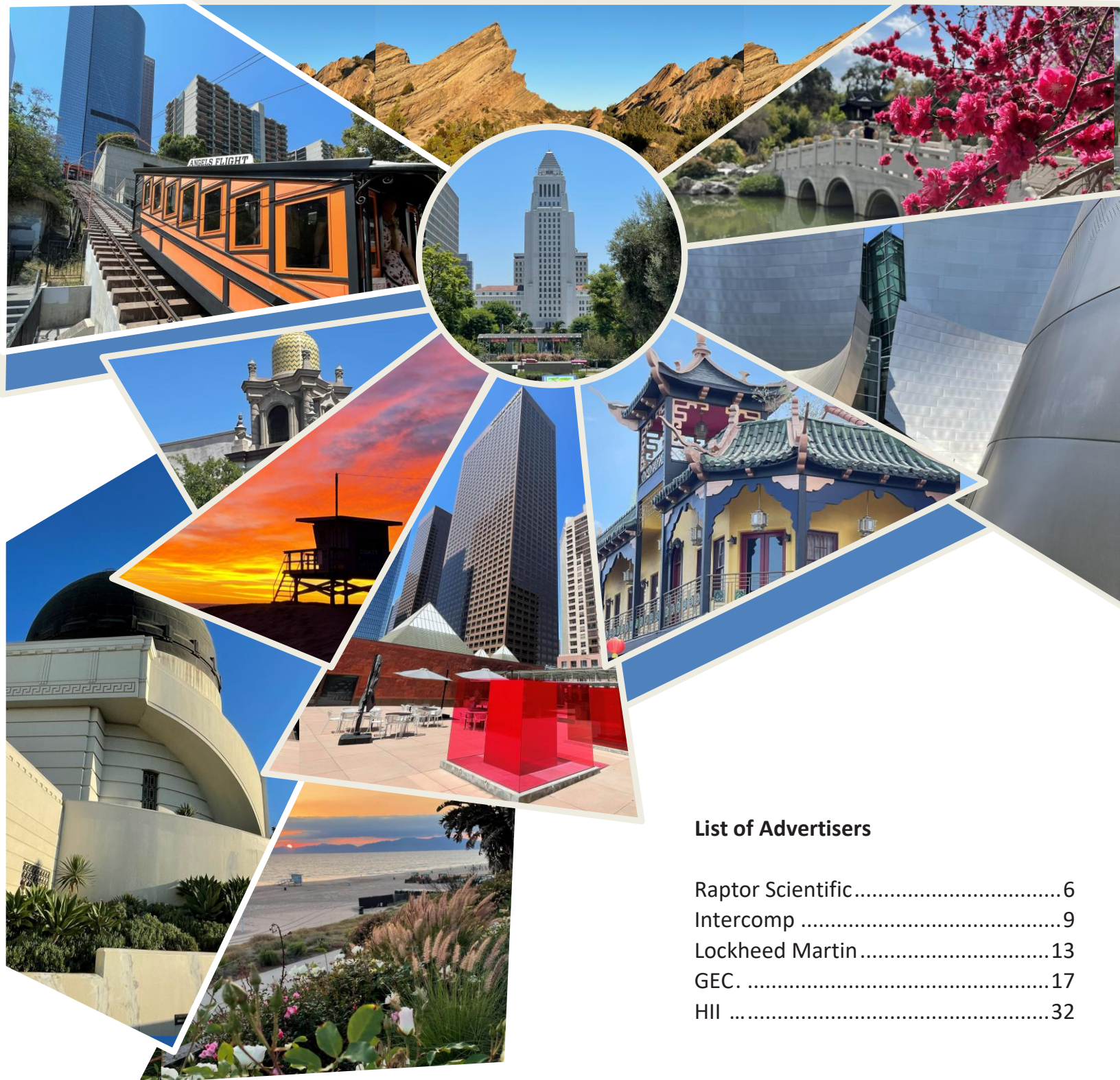
Society of Allied Weight Engineers, Inc.
Aerospace • Marine • Offshore • Land • Allied Industries

86th SAWE International Conference
June 2027
Hamburg - Germany

Special Forums for
Airline, Data & Supply Chain Management

© SAWE CEC

More info coming soon at sawe.org.



List of Advertisers

Raptor Scientific.....	6
Intercomp	9
Lockheed Martin.....	13
GEC.	17
HII	32

Image Credits to Lawrence Cruz